



# PONY CLUB AUSTRALIA NATIONAL CHAMPIONSHIPS MOUNTED GAMES



1ST - 5TH OCTOBER 2023

VENUE  
Benalla Sports & Equestrian Centre,  
Benalla, Victoria

HOSTED BY  
Pony Club WA



# INFORMATION GUIDE



PONY CLUB  
WESTERN AUSTRALIA



PONY CLUB  
AUSTRALIA



## MISSION STATEMENT

***Pony Club WA to host the Mounted Games component of the Petstock Pony Club National Championships in a safe and cost-efficient manner at a location that maximizes the opportunity for every state to be able to send teams.***

The Pony Club WA in conjunction with the State Active Riding Committee is organizing the satellite hub of the Petstock Pony Club National Championships at Benalla Sports and Equestrian Centre at Benalla over 3 days.

Benalla is located in Victoria approximately 2.5 hours (232 km) from Werribee Equestrian Centre. It is located on the Hume Highway which is the main highway between Sydney and Melbourne. It is about the same size as Northam in WA.

It is a fairly central location for Eastern States Teams to travel to.

Benalla Sports and Equestrian Centre boasts some exceptional facilities including a covered, floodlit all-weather sand arena, making it one of the best community-owned venues in the state.



## REFERENCE DOCUMENTS

- PCA National Gear Checking Rules
- PCA National Mounted Games Rules

**FIRST AID:** Medical Response

**VETS:** Sarah Cavill 0490815288

Dr. Caroline Duddy 0401364188

**FARRIER:** Peter Donly 0409 487 989

**UNIFORM FOR GALA DINNER:** As per your States formal uniform.

**PETSTOCK TO SUPPLY ALL FEED:** Their representatives will be holding a trade stall on site on Tuesday, Wednesday, and Thursday where feed can be ordered for delivery that afternoon. See the attached feed form.

**BENALLA BITES MOBILE VAN** will be attending the site on Wednesday and Thursday from 7:30 a.m. onwards. They will be providing breakfast, coffee, lunches, and snacks during the day.

**STEWARD:** Marc Fraser

## OUR SPONSORS

Thank you for the amazing support we have received from our Association and Championship Sponsors:

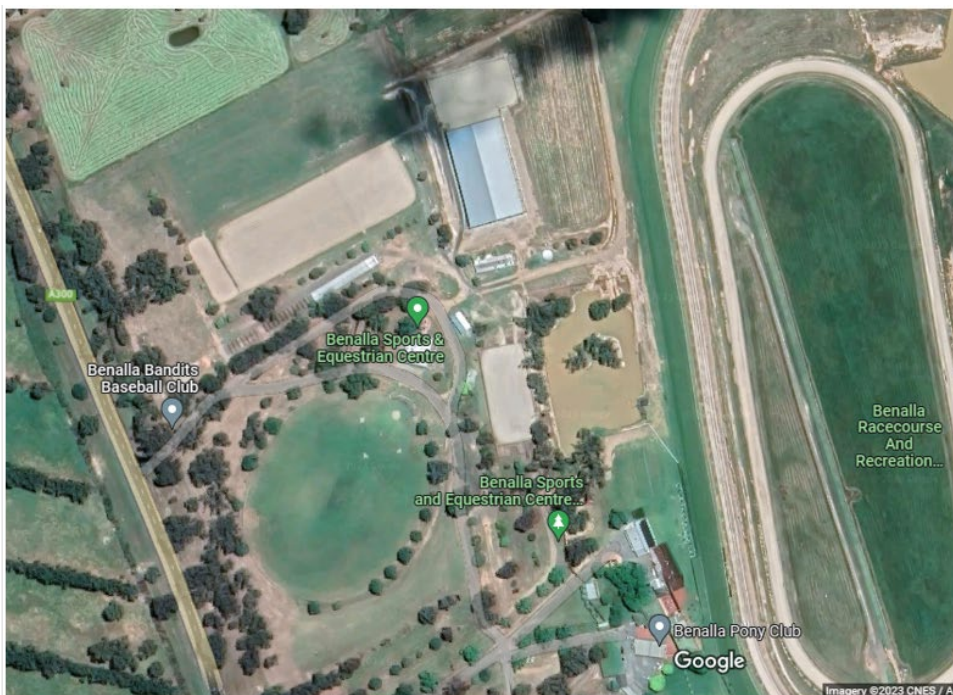


## BENALLA SPORTS & EQUESTRIAN CENTRE

The venue offers:

- A covered, floodlit sand arena 72m x 40m
- An open-air 60m x 35m warm up arena
- A large open-air, fenced sand arena 150m x 50m with a small warm-up attached.
- A quality open-air, fenced sand arena 76m x 34m
- Large maintained, grassed oval

- All-weather, sand lunging/round yard/warm-up ring
- 24 x covered yards with protective rubber sides
- 45 x open-air yards with protective rubber sides
- 8 x quality, user-friendly horse wash bays
- Toilet and shower facilities including disabled and baby change options.



- Well-appointed kitchen with canteen facilities
- Small meeting room with tea and coffee facilities
- 28 x powered camping sites.
- Plenty of non-powered camping sites
- The game event will be run on the polocrosse grounds.

A lot of big events are held at this complex, so they are well-experienced and equipped to have these types of events run there.

## RACES

<b>NATIONALS GAMES DAY 1</b>	<b>BENALLA</b>	<b>NATIONALS GAMES DAY 2</b>	<b>BENALLA</b>
TEAM BENDING RACE		HI LO RACE	
TWO FLAG RACE		BALL AND BUCKET RACE	
BALL AND FLAG RACE		LITTER RACE	
OLD SOCK RACE		BOTTLE RACE	
TACK SHOP RACE		FIVE CONE RACE	
FIVE MUG RACE POLE SP		QUOITS AND CONE	
THREE MUG RACE		PONY EXPRESS RACE	
BALL AND CONE RACE		TWO MUG RACE	
PONY CLUB POLE RACE		PYRAMID RACE	
TYRE RACE		ROPE RACE	
SWORD RACE		STEPPING STONE DASH	
WINDSOR CASTLE RACE		FIVE STATE FLAG	

<b>TIME TABLE</b>		
Sunday 1 October	Riders/ponies may start arriving	
Monday 2 October	All Teams to arrive	Riders will be camping with their teams/parents/team managers
Tuesday 3 October	Teams and Team Managers to inspect equipment	10:30am - 11:30am Senior Teams and Coaches
		11:30- 12:30pm Junior Teams and Coaches
	Team Managers Meeting	1:00pm - 3:00pm
	Pony Trot Up	3:00pm - 4:30pm
		Teams to present in State Team Order - TBA
	Welcome Dinner and Teams Introduction/Activity	6:30pm - 8:30pm*
Wednesday, 4 October	PPMG Competition to begin with half of the games run - 11 races	Polocrosse Grounds
	Line Steward Briefing for all Senior & Junior Line Stewards	9:00am
	Senior Teams Gear Check	9:00am
	Senior Part A Competition	10:00am - 12:00pm
	<b>Lunch Break</b>	<b>12:00 - 12:30pm</b>
	Junior Teams Gear Check	12:30
	Junior Part A Competition	1:00pm - 3:00pm
	Evening Activity Dinner	Activities from 5:00pm 6:00pm - 8:30pm**
Thursday 5 October	PPMG Competition to conclude with second half of the games run - 11 races	
	Line Steward Briefing for all Senior & Junior Line Stewards	9:00am
	Senior Teams Gear Check	9:00am
	Senior Part B Competition	10:00am - 12:00pm
	<b>Lunch Break</b>	<b>12:00 - 12:30pm</b>
	Junior Teams Gear Check	12:30pm
Thursday 5 October	Junior Part B Competition	1:00pm - 3:00pm
	<b>MOUNTED PRESENTATION</b>	3:30pm - All teams to be mounted

	Pack up gear and arena	Everyone to help after presentations
	<b>Gala/Wind Up Dinner</b>	6:30 at Benalla Racing Club***
Friday 6 October	Depart the event	

\* Catering in the clubhouse – Pasta night + dessert

\*\* Benalla Pony Club to provide dinner and games

\*\*\* Benalla Racing Club, 5-minute walking distance from Equestrian Centre. Two-course roast meal and dessert. Tea & Coffee. Dance Floor. Bar Available for non-Pony Club Teams, Coaches, or Team Managers. Soft drinks supplied.

**ponies get  
more  
at Petstock**

FEED | HEALTH CARE | RUGS | GROOMING  
SADDLERY | FOOTWEAR

**Equine products available at selected Petstock stores  
in Victoria and New South Wales.**

petstock.com.au

Follow us on

f d i y

**petstock**

## Camping:

Powered Camping sites: \$25 per night (28 Available)

Unpowered Camping: \$20 per night

Uncover Yards: \$15 per day (50 available)

Camping and yard requests are to be ordered separately on the entry form and allocated by organizers. There will be a \$50 clean bond charge. All camping sites and yards to be left clean and tidy with all manure at designated sites. The organizers will be checking before you leave. If this is not adhered to your State Branch will be invoiced \$50 cleaning fee. Hub fees for Team Managers and Coaches will be invoiced to the State Branches to cover the meal package.

## Yards

Sawdust to be used in yards. A pile of sawdust is available for use.

## Line Stewards

Each team is to provide 2 Line Stewards and an arena party to set up lanes.

See the link for the role of line stewards: [Active Riding | Pony Club Western Australia](#)



## A CORRECT TROT-UP

There are two main situations when you might need to trot your horse up – for your vet or for the judge in a showing class. Trotting your horse up properly for your vet is important because doing it incorrectly could affect his way of going and not give your vet a clear picture. At a show, a good trot-up will show your horse off at his absolute best. To master a good trot up...

- Make sure you stay level with your horse's shoulder and away from his side so the vet or judge has a good view of him.



- Look up and ahead to where you're going to help keep you straight and your horse moving forward positively.
- When you ask your horse to trot, he should react promptly, and the trot should be active – not too slow or too hurried.
- Hold the lead rope or reins so there's a little slack, and make sure his head and neck are straight so that his head movement isn't affected. This is particularly important when trotting him up for the vet because they'll want to see whether there is any head nod.
- Walk away and back first before asking him to do it in trot. Use this time to get him moving forward and listening to you.
- When it's time to turn, bring your horse back to walk, turn him away from you, then make sure he's straight before asking him to trot back to the judge or vet.



Product	QTY
BARASTOC Breed N Grow 20kg	
BARASTOC Calm Performer 20kg	
BARASTOC Complete Performer 20kg	
BARASTOC Equibix 20kg	
BARASTOC Supreme 20kg	
BARASTOC Thurra 20kg	
BENCHMARK Golden Oldies 20kg	
BENCHMARK Perfect Mash 20kg	
BENCHMARK Super Fibre Mash 20kg	
COPRICE C Cool Conditioner Pellets 20kg	
COPRICE Versatile 20kg	
EUREKA Cool Performance Pellet 12% 20kg	
Eureka Equestrian Complete 20kg	
Eureka Gold Rush 20kg	
Fiber Fresh Fiber Protect 20kg	
HYGAIN Allrounder 20kg	
HYGAIN Balanced 20kg	
HYGAIN Equine Senior 20kg	
HYGAIN Honey B 20kg	
HYGAIN Ice 20kg	
HYGAIN Meta Safe 20kg	
HYGAIN Micbarley 20kg	
HYGAIN Miclupins 20kg	
HYGAIN Release 20kg	
HYGAIN Showtorque 20kg	
HYGAIN Tracktorque 20kg	
HYGAIN Tru Care 20kg	
HYGAIN Zero Low Carb 20kg	
JOHNSON'S Alfalfa Plus 20kg	
JOHNSON'S Every Horse Weight Gain 20kg	
JOHNSON'S Horse & Pony 20kg	
Maxisoy 20kg	
MITAVITE Breeda 20kg	
MITAVITE Builda 25kg	
MITAVITE Cool Vitality 20kg	
MITAVITE Gumnuts 20kg	
MITAVITE Munga 20kg	
MITAVITE StudGro 20kg	
MITAVITE Xtra-Cool 20kg	
Pryde's Bio Mare Cubes 25kg	
Pryde's EasiFeed Four Old Timer 25kg	

#### Store Details

PETSstock Country Benalla  
 2-6 Yellow Brick Road  
[\(03\) 5762 6924](tel:0357626924)  
 Monday - Friday 8.30am - 5.30pm  
 Saturday 9am - 3pm  
 Sunday 10am - 3pm

#### MONDAY

##### CALL STORE TO ORDER

Order between 8.30am - 10am  
 for delivery at 3pm  
 Drop off location to be confirmed  
 Feed will need to be collected from here

#### TUESDAY

##### ORDERS ONLY AT THE PETSTOCK MARQUEE

Order between 8.30am - 10am  
 for delivery at 3pm  
 Drop off location to be confirmed  
 Feed will need to be collected from here

#### WEDNESDAY

##### ORDERS ONLY AT THE PETSTOCK MARQUEE

Order between 8.30am - 10am  
 for delivery at 3pm  
 Drop off location to be confirmed  
 Feed will need to be collected from here

Feed is subject to availability

#### Product

SCF Combo Chaff 25kg (Poly Woven)
SCF Lucerne Chaff 25kg (Poly Woven)
SCF Oaten Chaff 25kg (Poly Woven)
SCF Wheaten Chaff 20kg (Poly Woven)
VIC Clover Rye Hay
VIC Compressed Lucerne Hay
VIC Compressed Pasture Hay
VIC Compressed Teff Hay
VIC Lucerne Hay



Pryde's EasiGoing 20kg	
Pryde's EasiKeeper 20kg	
Pryde's EasiPerformance 25kg	
Pryde's EasiResponse 25kg	
Pryde's EasiResult 20kg	
Pryde's EasiSport 20kg	
Speedi-Beet 20Kg	
STANCE Copra Meal 20kg	

VIC Oaten Hay
VIC Pasture Hay
VIC Straw
VIC Teff Hay
MULTICUBE Lucerne & Oaten Hay Cubes 20kg
MULTICUBE Lucerne Hay Cubes 20kg
MULTICUBE Pasture (Clover Rye Oaten) Hay Cubes 20k
MULTICUBE Teff & Lucerne Hay Cubes 20Kg